

NEW

D4-280plus

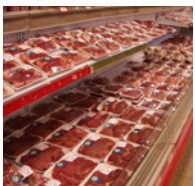


**Protect the green world
with a linerless printer**



Argox D4-280 linerless printer can reduce wasteful liner paper to protect the environment. Using "Print & Paste" 2 steps to make work effectively.

Application



Retail



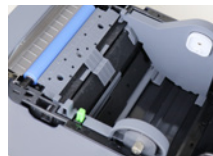
Transportation & Logistics



Takeaway & Delivery



Feature-rich to make daily work simple and easy



Special coating to prevent paper jam

All users are afraid of paper jam. D4-280plus has special surface coating to prevent paper jam, ensuring smooth operation.



Modular design

Users are easy to disassemble and replace printer head, roller and cutter without any tool.



Easy to maintain

With special mechanism and cutter design, D4-280plus allows users to maintain quickly and easily.



Diversified media widths

D4-280plus supports diversified media widths from 1" to 4.6" for different applications.

General Specifications

Print Specifications	
Printing Method	D4-280plus Direct Thermal
Printing Resolution	203 dpi (8 dots/mm)
Printing Speed	Max. 6 ips
Printing Length	Max. 6"(152.4 mm)
Printing Width	Max. 4.25"(108 mm)
Memory	32 MB SDRAM, 16 MB Flash ROM (USB storage up to 32GB)
CPU Type	32-bit RISC microprocessor
Consumables Specifications	
Sensors	Head open sensor, Paper end sensor (transmissive type), Taken off sensor
Media Type	Linerless: Continuous
Media	Max. width: 4.6" (118mm). Min. width: 1" (25.4mm). Thickness: 0.09mm +/-10um 5"(127mm) OD on a 1.5" (38.1mm) ID core, 40mm ID core also available
Fonts & Symbolologies	
Fonts	Internal character sets standard 5 alpha-numeric fonts from 0.049"H ~ 0.23" H (1.25mm ~ 6.0mm) Internal fonts are expandable up to 24x24 4 direction 0 ~ 270 rotation Soft fonts are downloadable Ability to print any Windows True Type font easily. Support scalable font
1D Barcodes	UPC-A, UPC-E, JAN/EAN, CODE39, CODE93, CODE128, GS1-128 (UCC/EAN128), CODABAR (NW-7), ITF, Industrial 2of5, MSI, UPCadd-on code, POSTNET, GS1 DataBar Omnidirectional, GS1 DataBar Truncated, GS1 DataBar Stacked, GS1 DataBar Stacked Omnidirectional, GS1DataBar Limited, GS1 DataBar Expanded, GS1DataBar Expanded Stacked
2D Barcodes	QR Code, PDF417 (including MicroPDF), DataMatrix (ECC200), GS1 DataMatrix, MaxiCode
Graphics	PPLA: PCX, BMP, IMG, HEX,GDI PPLB: PCX, BMP, Binary raster, GDI PPLZ: GRF, Hex, GDI
Emulation	PPLA, PPLB, PPLZ
Interface Characteristics and Integration	
Operation Interface	LED Indicator x 2, Button (Feed) x 1
Communication Interface	USB device, RS-232, Ethernet, USB host
Drivers	Windows Driver for Windows Vista/Win7/Win8/Win10, LINUX Driver, macOS Driver, Raspberry Pi Driver
Software	BarTender® from Seagull Scientific, Printer Tool
Application	iLabelPrint (Android)
Database Link	Argobar Pro support ODBC Database Connection: Excel, CSV, MS Access, MS SQL, Oracle MySQL, dBASE (*.dbf)
Operating & Environment Characteristics	
Power Source	Universal Switching Power supply. AC Input voltage: 100~240V, 50~60Hz. DC Output: 24V, 2.5A
Operation Environment	Operation Temperature: 41°F~95°F (5°C~35°C), 30% ~ 75% non-condensing, Storage Temperature: -4°F~122°F (-20°C~50°C)
Agency Listing	CB, CE, FCC
Physical Characteristics	
Printer Dimensions	W 183.92mm x H 166.7mm x D 271.16mm
Printer Weight	4.85 lbs (2.2 kg)

*Argox reserves the right to enhance and modify the specification without prior notice.
Please check Argox sales representative for most updated specifications.

Optional Items



WLAN



Bluetooth v2.1
Support BT 2.1
on Android
connectivity



ARGOX Certified Repair Centers

Consult your local Argox business partners for location and contacts.



Argox Information Co., Ltd.

7F., No.126, Ln.235, Baoqiao Rd., Xindian Dist., New Taipei City 231, Taiwan (R.O.C.)

Tel: +886-2-8912-1121 Fax: +886-2-8912-1124 <https://www.argoxt.com> <https://www.youtube.com/user/argoxt> email:service@argoxt.com

Copyright © 2021. Argox Information Co., Ltd. All Rights Reserved.