

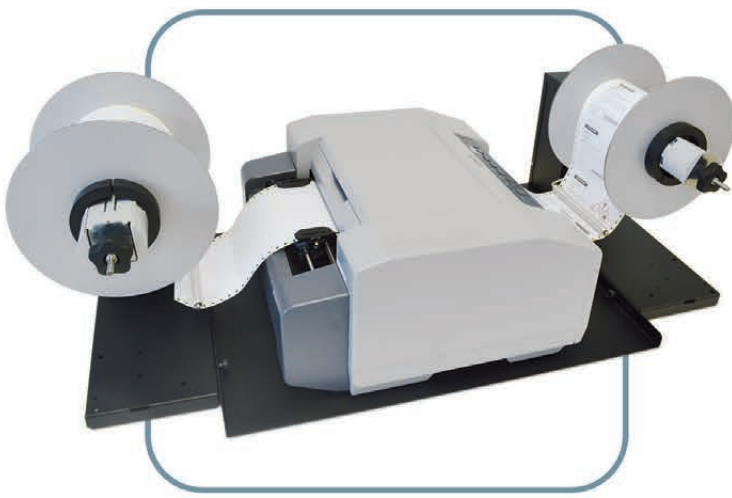
A WORLD OF SOLUTIONS

THESE PRODUCTS ARE CERTIFIED:



SMART SOLUTIONS FOR THE LABELING INDUSTRY

UNWINDER & REWINDER FOR EPSON C831 INKJET LABEL PRINTER



The new Unwinding/Rewinding system for Epson C831 Inkjet Label Printer can handle media up to 240mm wide and unwind/rewind label rolls having outside diameter up to 250mm. Units are equipped with a 3" core holder.

In order to guarantee a perfectly aligned media path, a specific baseplate which easily accommodates the Epson C831 is available, so to have a complete printing station unwinder + printer + rewinder.

Designed to easily handle tractor feeder media, the system can be matched with the Label Slitter that would unwind the previously printed roll, slit the tractor feeder edges and rewind labels to finished rolls.

Note: the label slitter cannot be used in line with the printer.

Electronic and mechanical features:

An external power supply 100/240VAC - 2.5A at 24V $\overline{\text{---}}$ allows an electronic circuit to provide, through the tension arm, the adjustment of the rotation speed and rotation direction. A 2A fuse is used as protection.

The unwinder and rewinder for the Epson C831 printer have two types of speed adjustments: it is possible to set the main speed through a knob and the tension arm automatically adjusts the speed from zero, up to the desired speed. When the roll runs out, the device stops and beeps.

LABEL UNWINDER

The position of the tension arm is set as follows:

- When the printer forwards the media for printing, the tension arm goes up, the device unwinds the media.
- When the tension arm is in the middle position, the device is idle.
- When the printer pulls back the media, the tension arm goes down, the device rewinds the media.

LABEL REWINDER

The position of the tension arm is set as follows:

- When the printer forwards the media for printing, the tension arm goes down, the device rewinds the media.
- When the tension arm is in the middle position, the device is idle.
- When the printer pulls back the media, the tension arm goes up, the device unwinds the media.

LABEL UNWINDER

ASD1134-S4

3" fixed core holder

LABEL REWINDER

ASS1134-S4

3" fixed core holder

PRINTER PLATE

EPS831-JPL

Printer plate for
EPSON C831



EPSON C831 printer with ASD1134-S4 and ASS1134-S4