



mPLUS2

Mini panel printer

- High print quality (204 DPI)
- Paper width: 58mm
- 100% compatible with the previous MiniPLUS version
- Paper weight: 55-70gr/mq
- Power supply: 4-7.5Vdc \pm 10%
- 4MB internal flash memory for logos and fonts
- Interfaces on board: USB, Serial RS232 and serial TTL (selectable with lever switch)
- It prints 1D and 2D barcodes (QR CODE and PDF417)
- Font: any language available
- Sensors: head temperature, paper end, cover open
- UL, CE, FCC approved
- The ideal solution for tough environments: from -20 up to +70 degrees
- **Energy-efficient** functionality to reduce consumption

CHARACTERISTICS

APPLICATIONS

- Workshop equipment
- Medical equipment
- Weighing instruments
- Sterilisation equipment
- Control and measurement instruments
- Taximeters

AVAILABLE VERSIONS

- Serial RS232/TTL and USB, 5Vdc
- Mechanical version (without electronic board)

ACCESSORIES

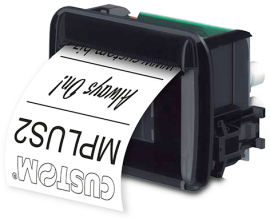
What is in the box:

- Device, paper roll, fixing hooks

TECHNICAL SHEET

Printing Method	Thermal
Number of dots	8 dots/mm
Columns	24/40
Resolution	203 DPI
Printing (mm/sec)	max 50mm/sec (in absence of energy-efficient functionality)
Character set	International fonts on board: All European, Russian,Turkish,Arabic,Chinese (GB18030), Katakana
Supported Barcode	UPC-A, UPC-E, EAN8, EAN13, CODE39, ITF, CODABAR, CODE93, CODE128, CODE32 and Barcode 2D PDF417 and QRcode
Paper width	58 mm
Paper weight	from 55 to 70 g/m ²
Roll Dimension	External diameter: max 30mm Internal diameter: 13mm
Sensors	head temperature, paper end, cover open
Emulation	Escape Command compatibility
Interfaces	RS232/TTL, mini USB
Data Buffer	2 kB
Flash Memory	4 MB
Graphic Memory	1 MB internal flash memory + 4MB external flash memory; 128 KB internal RAM + 8MB external RAM
Drivers	Windows [®] (32/64 bit) – only on request WHQL and silent installation; Linux (32/64 bit); Virtual COM (Linux or Windows 32/64 bit); Android™
Software Tools	PrinterSet, Custom Windows API
Power supply	4-7.5 Vdc ±10%
Operating temperature	from -20 °C to +70 °C
Marks	UL, CE, FCC
Dimensions	63.9 (L) x 61.2 (H) x 87.2 (W) mm
Weight	98gr

MODELS



915CW170300333

PRINTER MPLUS2 RX65 USB RS232

TTL

Via Berettine, 2 - 43010 Fontevivo PR - VAT: IT02498250345 - TEL: +39 0521 680111 - FAX: +39 0521 610701 - UNIQUE CODE: 8RQN7AZ

The technical data on this website are not binding and may be changed without advanced notice.

Last update: 17 October 2022